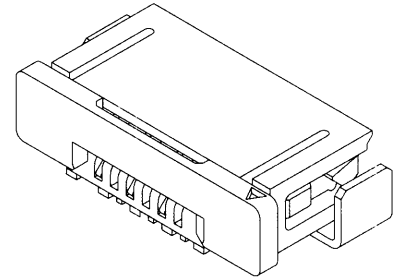


# molex® 0.625mm (.0246") Pitch FPC Connector

## 52396 Right Angle, SMT, ZIF Bottom Contact Style



### FEATURES AND SPECIFICATIONS

#### Features and Benefits

- Sizes 6 to 30 circuits
- For 0.20mm thick FPC
- Metal solder tabs provide PCB hold-down and strain relief for SMT tails

#### Reference Information

Packaging: Embossed tape  
Designed In: Millimeters

#### Electrical

Voltage: 50V  
Current: 0.2A  
Contact Resistance: 20mΩ max.  
Dielectric Withstanding Voltage: 250V AC/1 min.  
Insulation Resistance: 50 MΩ min.

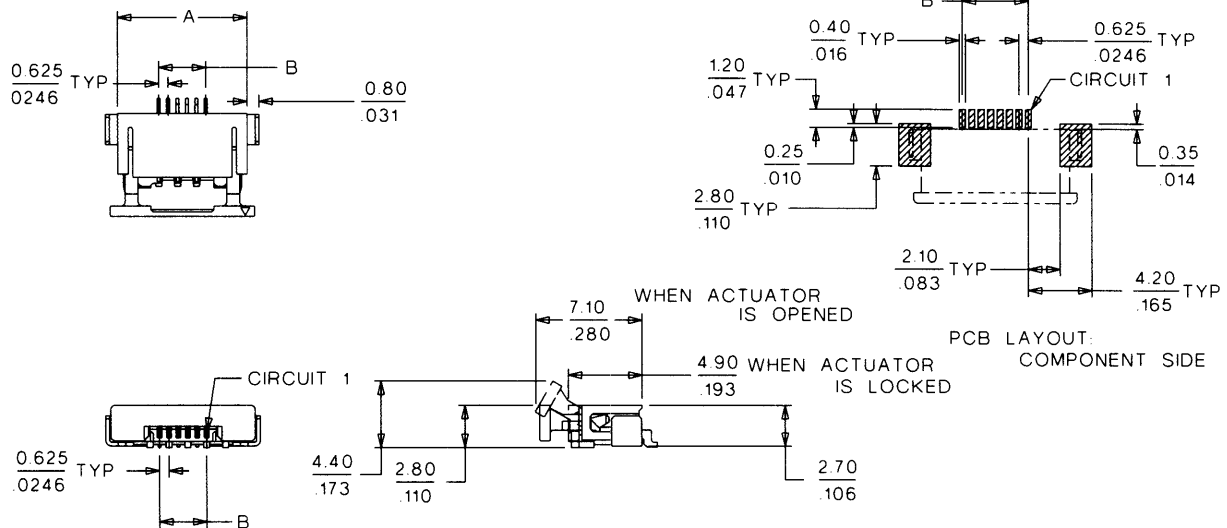
#### Physical

Housing: 4/6 nylon, UL 94V-0  
Actuator: PPS, UL 94V-0  
Contact: Phosphor Bronze  
Plating: Tin  
Solder Tabs: Copper Alloy, Tin plating  
Operating Temperature: -20 to +85°C

FFC/FPC Connectors

G

### CATALOG DRAWING (FOR REFERENCE ONLY)



### ORDERING INFORMATION AND DIMENSIONS

Circuits	Order No.	Dimension		Carrier Tape Width
		A	B	
6	52396-0690	8.575 (.337)	3.125 (.123)	24.000 (.945)
7	52396-0790	9.200 (.362)	3.750 (.147)	24.000 (.945)
8	52396-0890	9.825 (.386)	4.375 (.172)	24.000 (.945)
9	52396-0990	10.450 (.411)	5.000 (.196)	24.000 (.945)
10	52396-1090	11.075 (.436)	5.625 (.221)	24.000 (.945)
11	52396-1190	11.700 (.460)	6.250 (.246)	24.000 (.945)
12	52396-1290	12.325 (.485)	6.875 (.270)	24.000 (.945)
13	52396-1390	12.950 (.509)	7.500 (.295)	24.000 (.945)
14	52396-1490	13.575 (.534)	8.125 (.319)	24.000 (.945)
15	52396-1590	14.200 (.559)	8.750 (.344)	24.000 (.945)
16	52396-1690	14.825 (.583)	9.375 (.369)	24.000 (.945)

Circuits	Order No.	Dimension		Carrier Tape Width
		A	B	
17	52396-1790	15.450 (.608)	10.000 (.393)	24.000 (.945)
18	52396-1890	16.075 (.632)	10.625 (.418)	32.000 (1.260)
20	52396-2090	17.325 (.682)	11.875 (.467)	32.000 (1.260)
22	52396-2290	18.575 (.731)	13.125 (.516)	32.000 (1.260)
23	52396-2390	19.200 (.755)	13.750 (.541)	32.000 (1.260)
24	52396-2490	19.825 (.780)	14.375 (.565)	32.000 (1.260)
25	52396-2590	20.450 (.805)	15.000 (.590)	32.000 (1.260)
26	52396-2690	21.075 (.829)	15.625 (.615)	44.000 (1.732)
29	52396-2990	22.950 (.903)	17.500 (.688)	44.000 (1.732)
30	52396-3090	23.575 (.928)	18.125 (.713)	44.000 (1.732)

Note: For cable specification dimensions, see cable pages at end of section